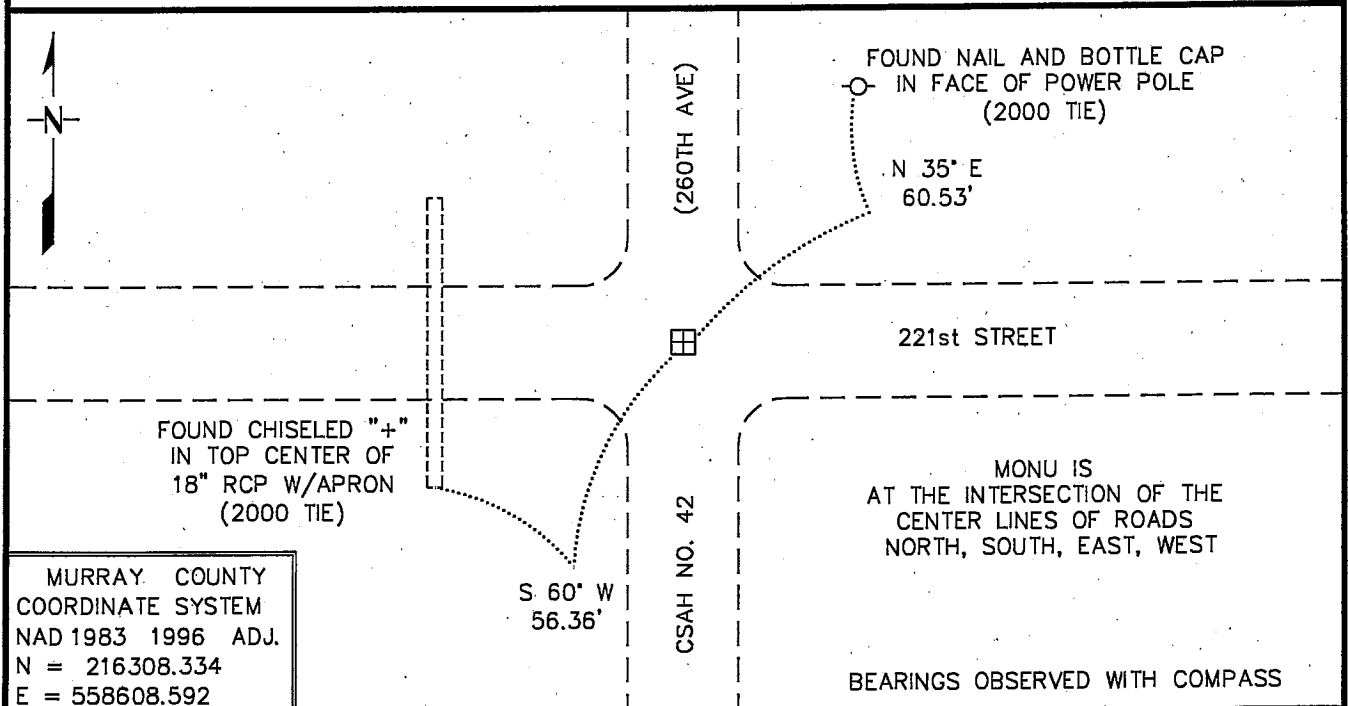


# CERTIFICATE OF LOCATION OF GOVERNMENT CORNER

NORTHEAST Corner of Section 17, Township 108 N, Range 39 W  
5th Principal Meridian, State of Minnesota, County of MURRAY

At the corner location shown on the sketch:

- On 7/28/2009 found a 8" X 10" X 32" BROKEN STONE, DOWN 7.3'  
DATE
  - left monument as found,     lowered monument,     removed monument (explain)
  - On 7/28/2009 Placed a 3/4" X 24" REBAR WITH PLASTIC CAP STAMPED  
DATE
- "MN DNR LS 17003", DOWN 0.4', OVER STONE



Statement of evidence for this corner location is on back of this page. 9/1/2009  
TRA00706.00.00.01

I certify that this document was researched and prepared by me or under my direct supervision.

SIGNATURE *Bruce W. Sheppard*    DATE 9/14/09    License Number 17003  
 Title:     Land Surveyor     Professional Engineer     County Surveyor     County Engineer

The DNR Division of Lands and Minerals contacted the following for survey information:

Minnesota History Center in St. Paul  
Murray County Recorder's Office  
Murray County Highway Engineer's Office  
Zieske Land Surveying, Inc. of Windom  
Bueltel-Moseng Land Surveying of Marshall

- 1861 U.S. General Land Office notes, obtained from the Minnesota History Center, show the corner marked with a wood post with pits and mound.
- 1899 June 19, Surveyor's Record Book A, Page 85, obtained from the County Recorder's Office, contains a survey in Section 9 by J.W. Woolstencroft. Survey states the following about the corner:  
"stone 8-10-32"  
Survey does not indicate if the stone was found or set and no distances are shown to it.
- 1899 June 19, Murray County Highway Department section corner information website, states that an 8" x 10" x 32" stone was located at the corner with the following ties:  
tack in corner post, northeast, 48.7 feet  
tack in corner post, southeast 48.3 feet  
The following is also noted:  
"call for more details"
- 1899 June 20, Surveyor's Record Book A, Page 117, obtained from the County Recorder's Office, contains a survey in Section 9 by J.W. Woolstencroft. Survey states the following about the corner:  
"stone 8-10-32"  
Survey does not indicate if the stone was found or set. The corner is shown:  
2636.5 feet from the south quarter corner of Section 8
- 1901 Surveyor's Record Book A, Pages 240, 247, 248, 255 and 256, obtained from the County Recorder's Office, contains a survey by D.L. Bighorn, Redwood County Surveyor, which record was made on June 12, 1915, by J.R. Johnston, Murray County Surveyor, from original plat on file in the office of the Town Clerk of Holly Township. Survey shows "govt corner" symbol at corner but a description of a monument is not given. The corner is shown:  
2637.7 feet from the south quarter corner of Section 8  
2648.0 feet from the east quarter corner of Section 8  
2646.8 feet from the north quarter corner of Section 16  
2651.0 feet from the east quarter corner of Section 17
- The above information is also contained in a Surveyor's Record Book, obtained from the County Highway Engineer's Office.
- 1999 Construction Plan Sheet Number 21 (Metric Plan) for County State Aid Highway Number 42, obtained from the County Highway Engineer's Office, shows a symbol for corner but does not indicate what kind of monument was found or set. The corner is shown:  
at Station 12+886.16  
in a cut section of 1.231 meters (4.04 feet)

No A page in a Surveyor's Record Book, obtained from the County Highway Engineer's Office,  
Date shows a concrete stone at the corner, but does not indicate if it was found or set. The following ties  
are shown to the corner:

R.P. tack in corner post, northeast, 48.7 feet

R.P. tack in corner post, southeast, 48.3 feet

2000 March 21, Murray County Highway Department section corner information website, states that a  
3/8" rebar was located at the corner, 0.2 of a foot below grade with the following ties:

N&C in power pole, east-northeast, 60.15 feet

"x" in RCP culvert, west-southwest, 56.7 feet

The following is also noted:

"call for more details"

2009 July 28, the DNR Division of Lands and Minerals hired a backhoe to dig for evidence of the  
corner and found the following:

a) 3/8 inch diameter rebar, 0.3 of a foot below the surface

b) 3/8 inch by 24 inch rebar, 4 feet below the surface

c) concrete cylinder, 4.7 feet below the surface

d) 8 inch by 10 inch by 32 inch broken stone, 7.3 feet below the surface

The rebars and concrete cylinder were not found over the stone, they were found to be 0.61 of a  
foot, 0.45 of a foot and 0.52 of a foot respectively from the stone.

Continued digging to a depth of 8 feet but no other evidence of a monument was found. The  
excavation was 6 feet north-south by 3 feet east-west by 8 feet deep the center being at the  
intersection of the centerline of roads north, south, east and west. The 8 inch by 10 inch by 32  
inch broken stone was reset as found and the concrete cylinder was reset down 3.5 feet over the  
stone and a 3/4 inch by 24 inch rebar with a plastic cap stamped "MN DNR LS 17003" was set  
over the concrete cylinder and found them to be:

at the intersection of the centerline of roads north, south, east and west

2663.83 feet from the north quarter corner of Section 16

2637.90 feet from the east quarter corner of Section 17

Searched for and found record ties as shown on the sketch of reference ties.

Consulted with LaMoine Meyer, Holly Township Clerk, about the 1901 survey by D.L. Bighorn,  
and he said that the survey information that the Township has is the same as what's on file at the  
County Recorder's Office.

Analysis of the above information led the DNR Division of Lands and Minerals to conclude that the 3/4  
inch by 24 inch rebar with a plastic cap stamped "MN DNR LS 17003", which was set over a found 8  
inch by 10 inch by 32 inch broken stone marks the location of the corner. The found 3/8 inch rebars were  
discarded.